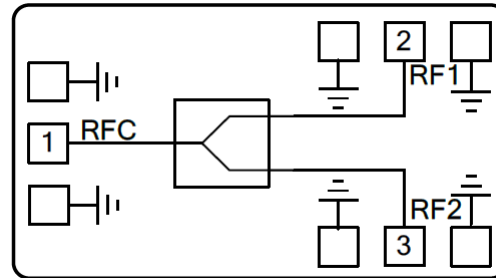


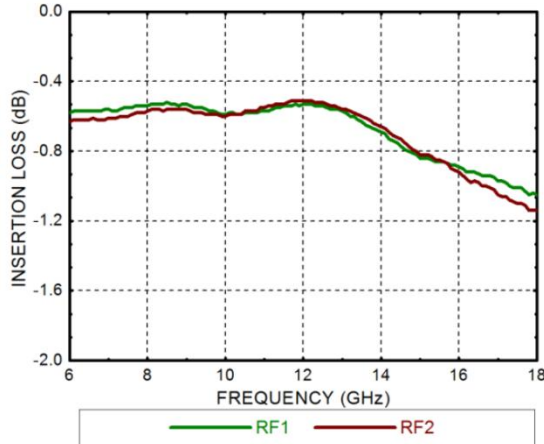
Features

- Frequency: 6-18GHz
- Insertion Loss: 0.8dB
- Input/Output: 50Ω matched
- Die Size: 1.5 x 1.0 x 0.1 mm

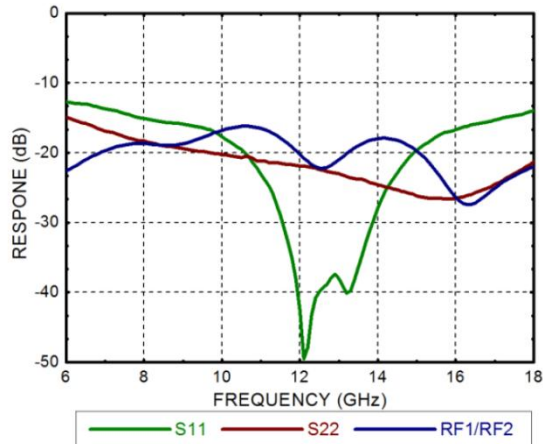
Functional Block Diagram

Electrical Specifications
TA = +25°C, Pin=0dBm

| Parameters | Min. | Typ. | Max. | Units |
|-----------------------|------|--------------|------|------------|
| Frequency | | 6-18 | | GHz |
| Insertion Loss | | 0.8 | | dB |
| Flatness | | ±0.25 | | dB |
| Isolation | | 20 | | dB |
| Return Loss | | 18 | | dB |

Insertion Loss

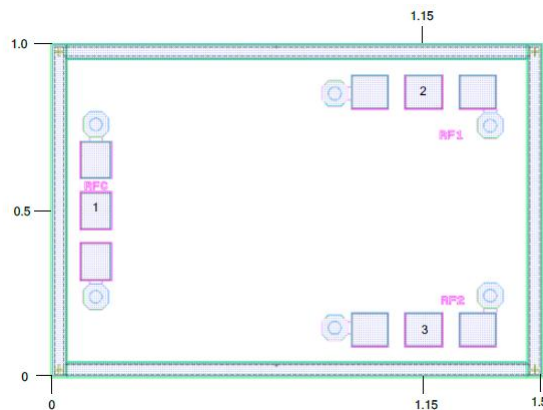


Isolation & Return Loss



Outline Drawing:

All Dimensions in mm



Pad Description

| Pad | Function | Description |
|-----|----------|----------------|
| 1 | RFC | RF Common Port |
| 2,3 | RF1,RF2 | RF Branch Port |

Maximum Ratings:

1. Maximum input power: +37dBm
2. Operating temperature: -55°C to +85°C
3. Storage temperature: -65°C to +175°C