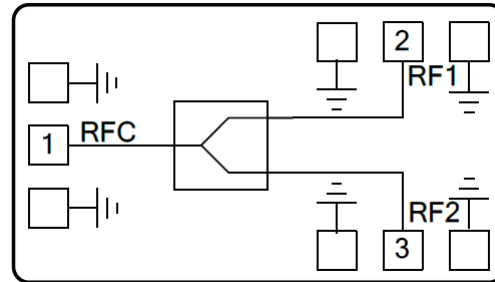


Features

- Frequency: 2-8GHz
- Insertion Loss: 0.7dB
- Input/Output: 50Ω matched
- Die Size: 1.5 x 0.99 x 0.075 mm

Functional Block Diagram

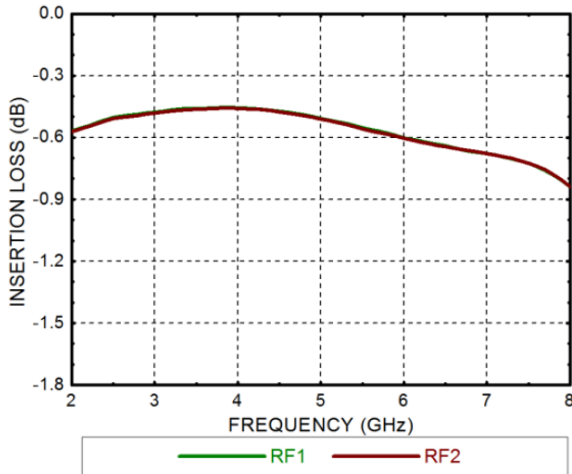


Electrical Specifications

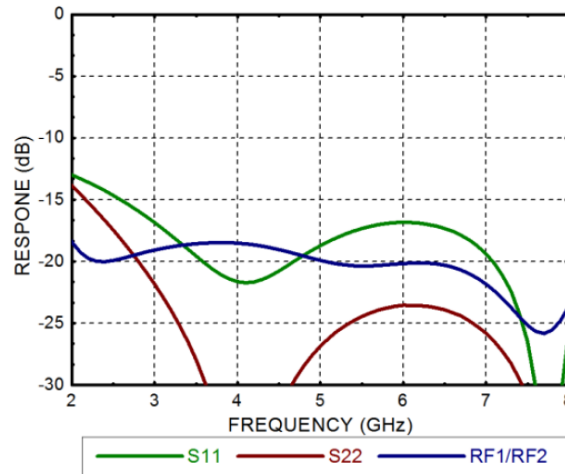
TA = +25°C, Pin=0dBm

Parameters	Min.	Typ.	Max.	Units
Frequency		2-8		GHz
Insertion Loss		0.7		dB
Flatness		±0.2		dB
Isolation		20		dB
Return Loss		15		dB

Insertion Loss

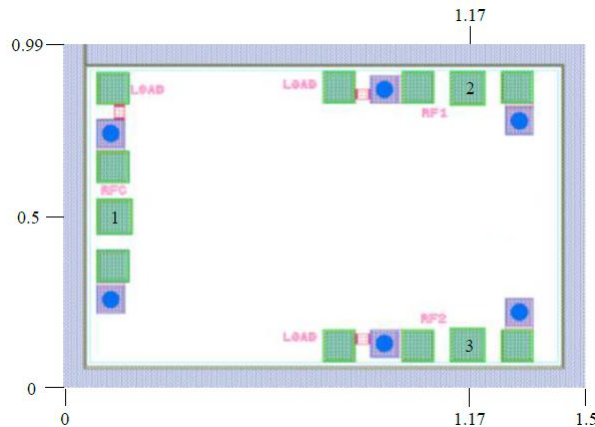


Isolation & Return Loss



Outline Drawing:

All Dimensions in mm



Pad Description

Pad	Function	Description
1	RFC	RF Common Port
2,3	RF1,RF2	RF Branch Port

Maximum Ratings:

1. Maximum input power: +37dBm
2. Operating temperature: -55°C to +85°C
3. Storage temperature: -65°C to +175°C